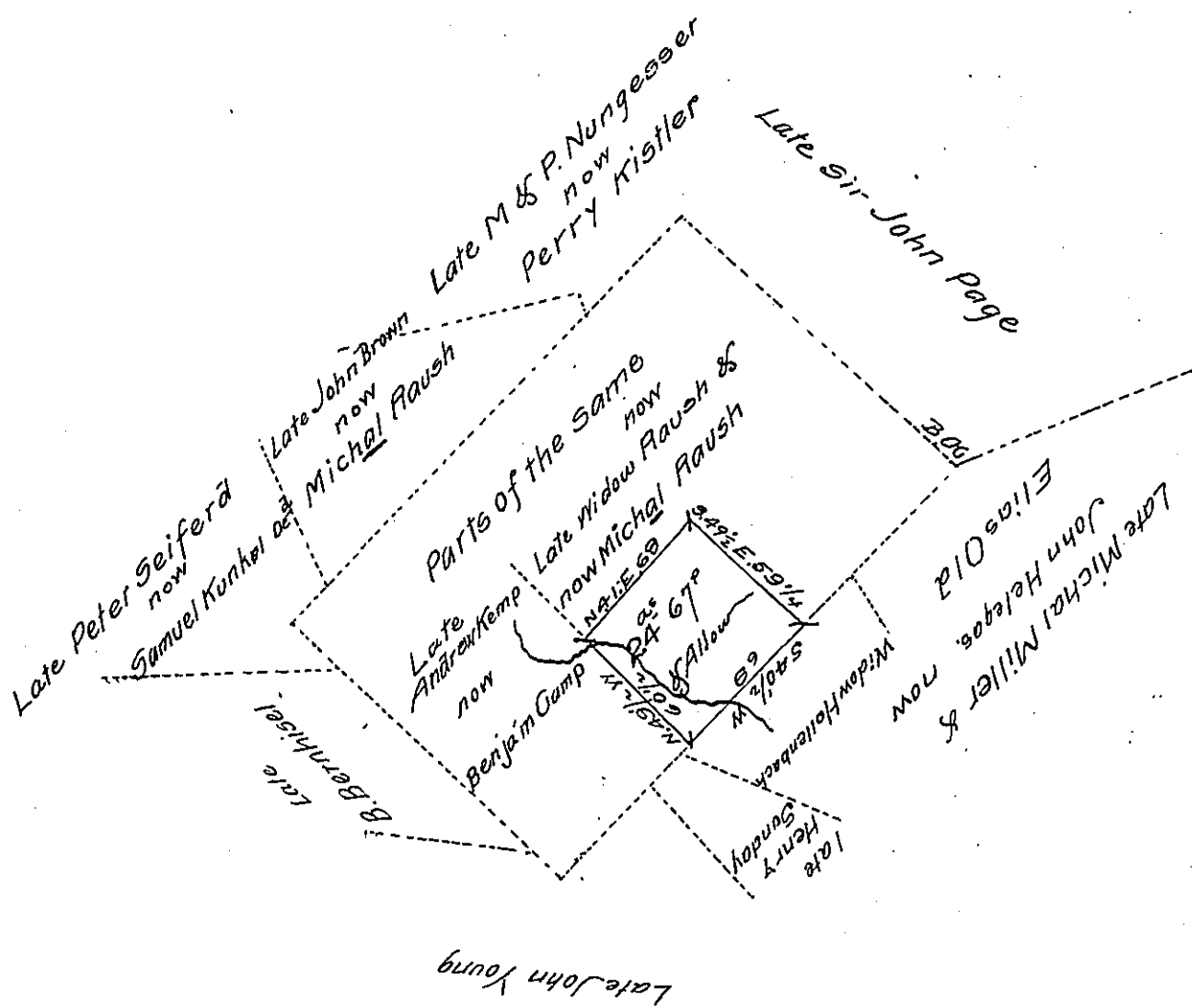


FORM NO. 1.



Twenty Four Acres, Sixty Seven Piches & Allowance Part of Two hundred and Fifty acres Warrent^h Conred Frye. Situated in Lynn Town-ship Lehigh County. The above resurveyed and returned separately for George Hillegas July 22nd 1828

George S. Eisenhart

In Testimony that above is a copy of the Original remaining on file in the Lehigh County Surveyors Office. And Being the Property of Benjamin Camp. Witness my hand this 4th day of January A.D. 1865 - For Patenting

Sol. Fogel C.S.

Hon. James P. Barr. Surveyor General

IN TESTIMONY that the above is a copy of the original remaining on file in the Department of Internal Affairs of Pennsylvania, made comformably to an Act of Assembly approved the 16th day of February 1833, I have hereunto set my hand and caused the Seal of said Department to be affixed at Harrisburg, this twenty-third day of December 1907

Henry Howard
Secretary of Internal Affairs.